

Baritone (B.C.)

Newent Symphony 5th Mvt

May Hill

Bill Anderton

$\text{♩} = 100$

f A dominant presence in the landscape *p*

9

f 16

A

f

39

5 *f*

51

59

15 16 **B** *f*

A magical atmosphere

95

mf

103

111

119

rit. **C** $\text{♩} = 40$ 36 36

Climbing to the trees

197 $\text{♩} = 100$ **D** $\text{♩} = 120$

6

Thunder, rain and wind

Detailed description: This musical staff begins with a treble clef and a 4/4 time signature. It starts with a six-measure rest, followed by a series of eighth and quarter notes. A dynamic marking of *f* is present. A box labeled 'D' is placed above the staff. The tempo changes from 100 to 120. The staff ends with a half note and a quarter note.

209

Detailed description: This musical staff continues the melody with eighth and quarter notes. It features a dynamic marking of *f* and a box labeled 'D' above the staff.

215

Detailed description: This musical staff continues the melody with eighth and quarter notes. It features a dynamic marking of *f* and a box labeled 'D' above the staff.

222

E

Detailed description: This musical staff continues the melody with eighth and quarter notes. It features a dynamic marking of *f* and a box labeled 'E' above the staff.

228

F

20

f

Detailed description: This musical staff begins with a 20-measure rest, followed by a series of eighth and quarter notes. It features a dynamic marking of *f* and a box labeled 'F' above the staff.

253

G

ff

Detailed description: This musical staff continues the melody with eighth and quarter notes. It features a dynamic marking of *ff* and a box labeled 'G' above the staff.

259

rit.

$\text{♩} = 80$

mf

There is an ancient, Celtic feel

Detailed description: This musical staff continues the melody with eighth and quarter notes. It features a dynamic marking of *mf*, a tempo marking of 80, and a box labeled 'G' above the staff. The text 'There is an ancient, Celtic feel' is written below the staff.

265

Detailed description: This musical staff continues the melody with eighth and quarter notes. It features a dynamic marking of *mf* and a box labeled 'G' above the staff.

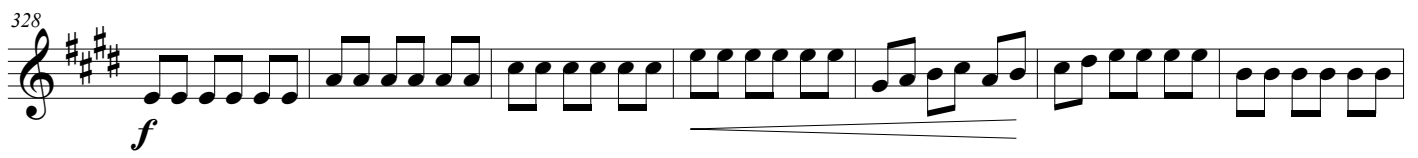
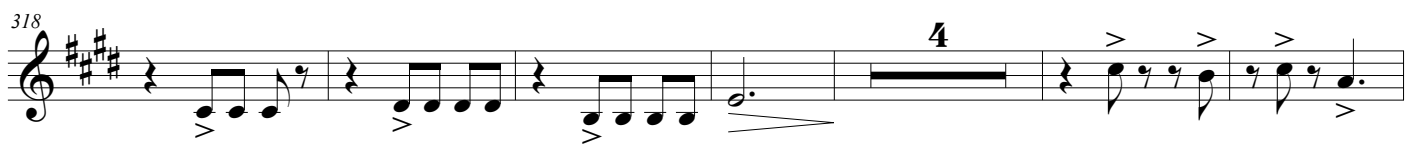
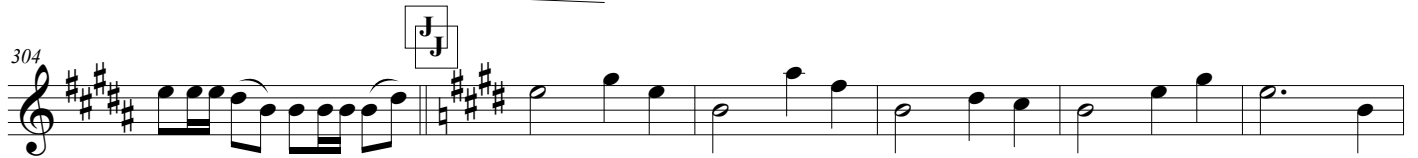
271

Detailed description: This musical staff continues the melody with eighth and quarter notes. It features a dynamic marking of *mf* and a box labeled 'G' above the staff.

277

Detailed description: This musical staff continues the melody with eighth and quarter notes. It features a dynamic marking of *mf* and a box labeled 'G' above the staff.

H



356

L *accel.* ♩ = 120 ♩ = 140

373

381